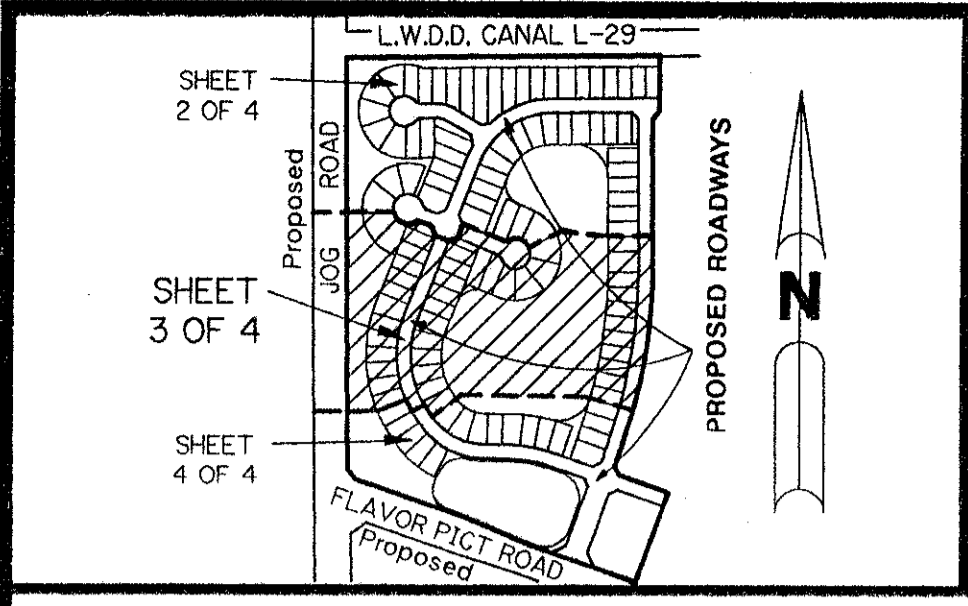


SUBDIVISION * CORAL LAKES III
 BOOK 71 PAGE 150 FLOOD MAP # 200A
 FLOOD ZONE B ZONING AR
 QUAD # 36 SE NPN ZIP CODE 33437
 PUD NAME CORAL LAKES

TAZ 456



KEY MAP
N.T.S.

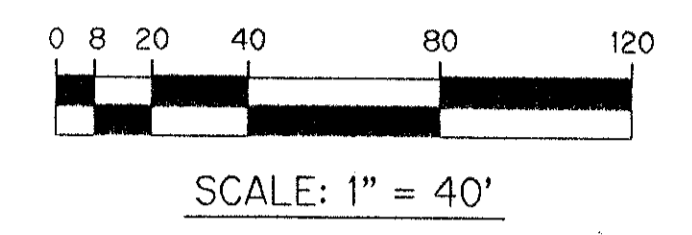
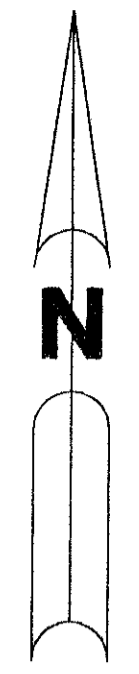
- LEGEND**
- L.A.E. - LIMITED ACCESS EASEMENT
 - R - RADIUS
 - Δ - DELTA ANGLE
 - P.B. - PLAT BOOK
 - P.G.S. - PAGES
 - O.R. - OFFICIAL RECORD
 - P.U.D. - PLANNED UNIT DEVELOPMENT
 - P.L.S. - PROFESSIONAL LAND SURVEYOR
 - N.R. - NOT RADIAL
 - R - SURVEY TIE LINE
 - - PERMANENT REFERENCE MONUMENT, PLS #4901
 - - PERMANENT CONTROL POINT, PLS #4901
 - O.E. - OVERHANG EASEMENT
 - U.E. - UTILITY EASEMENT
 - D.E. - DRAINAGE EASEMENT
 - FPL - FLORIDA POWER AND LIGHT COMPANY
 - FE - FLOOD PLAIN EASEMENT
 - OS - OPEN SPACE
 - O.R.B. - OFFICIAL RECORD BOOK
 - R.O.W. - RIGHT-OF-WAY

PLAT OF CORAL LAKES III

BEING A REPLAT OF A PORTION OF TRACT "A"
 OF THE PLAT OF CORAL LAKES AS RECORDED IN PLAT BOOK 67, PAGES 197-198
 LYING IN SECTION 3, TOWNSHIP 46 SOUTH, RANGE 42 EAST,
 PALM BEACH COUNTY, FLORIDA

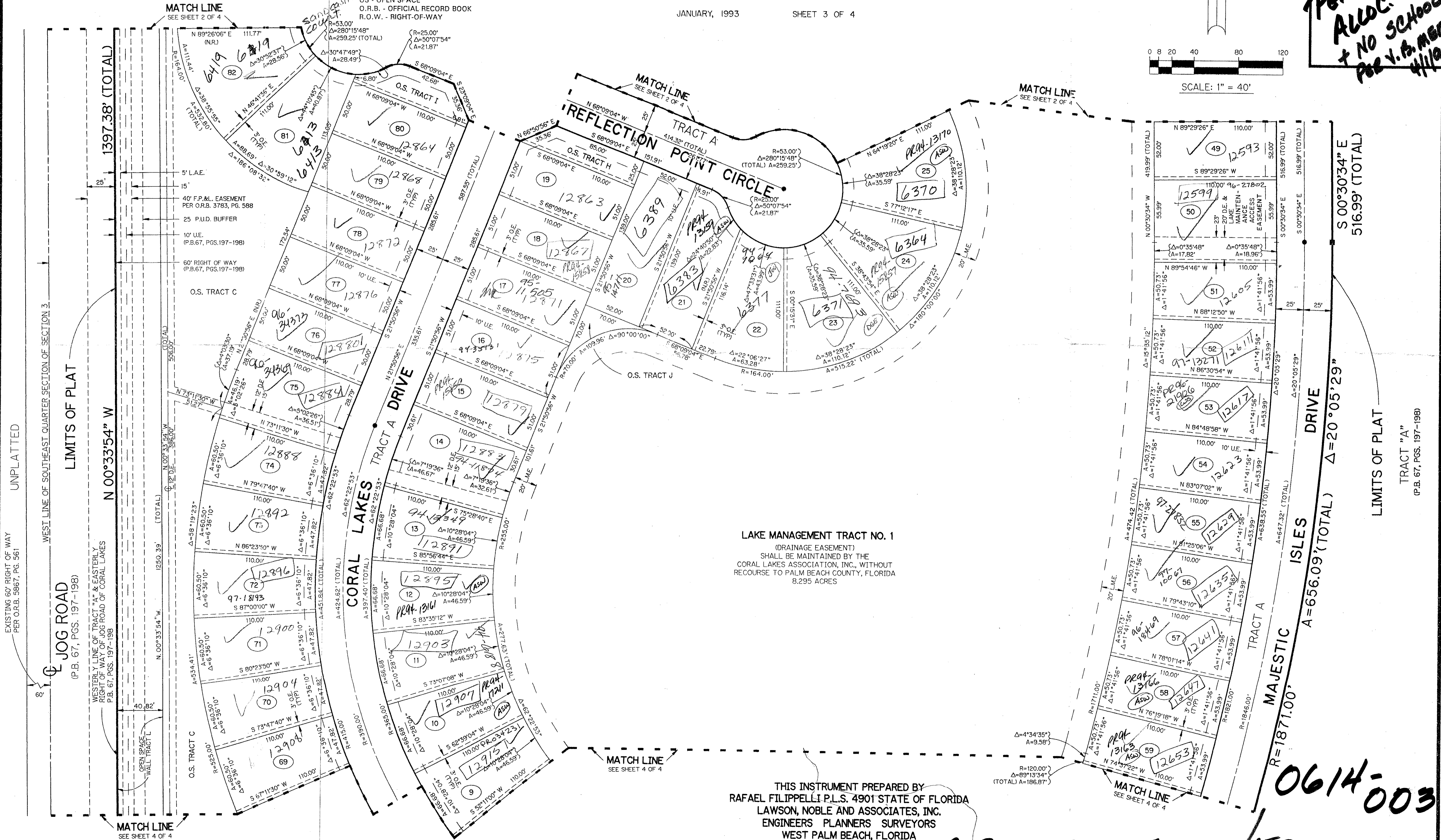
JANUARY, 1993 SHEET 3 OF 4

0614-003



152

*RET. 614-013
 ALLOC #000
 NO SCHOOLS
 FOR V.B. MEMO
 4/1/94*



LAKE MANAGEMENT TRACT NO. 1
 (DRAINAGE EASEMENT)
 SHALL BE MAINTAINED BY THE
 CORAL LAKES ASSOCIATION, INC., WITHOUT
 RECOURSE TO PALM BEACH COUNTY, FLORIDA
 8.295 ACRES

THIS INSTRUMENT PREPARED BY
 RAFAEL FILIPPELLI P.L.S. 4901 STATE OF FLORIDA
 LAWSON, NOBLE AND ASSOCIATES, INC.
 ENGINEERS PLANNERS SURVEYORS
 WEST PALM BEACH, FLORIDA

0614-003